

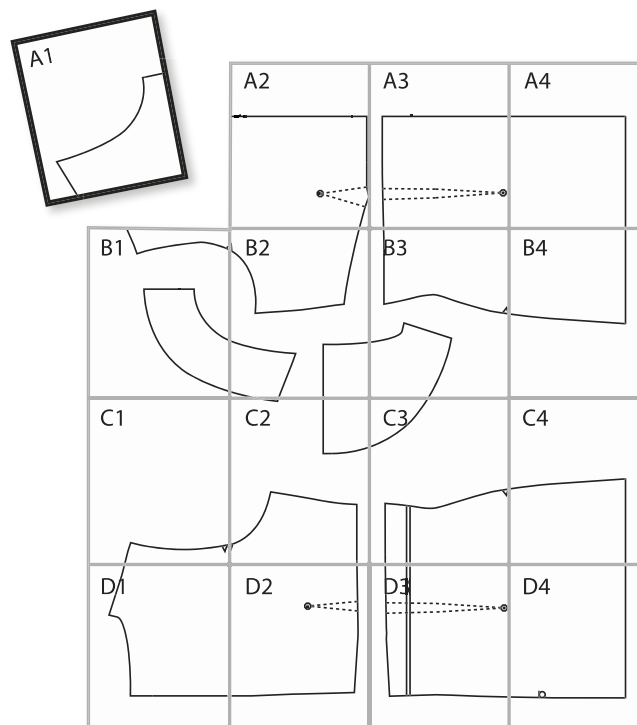
TOILETRIES **BAG** PATTERN

How to piece together and use your pattern

1 Download this PDF pattern to your computer, and print it out.
The pages will be labeled in the order that they fit together.

2 Trim the white margins from the printed pages, and tape the pages together, using the letters and gridlines as a guide (see diagram below). Cut around the pattern.

3 The seam allowance is included in the pattern. One square in the grid equals 2in².



A1

A1

TOILETRIES BAG

Cut 2 on fold
on each fabric

PLACE TO FOLD

A1

A1